

DIGITAL BANES

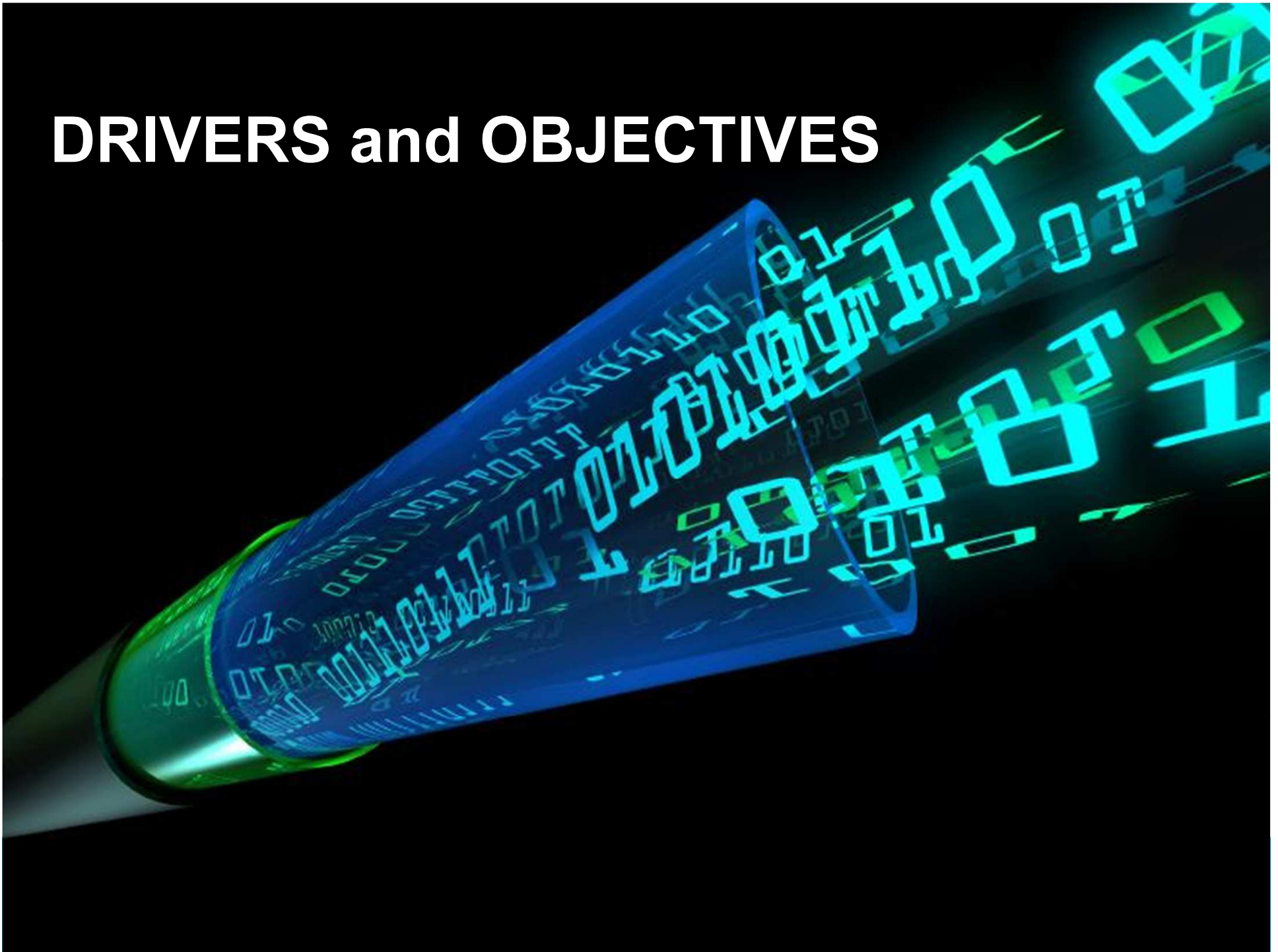
PDS

**March 2016
Thys Van Tonder**


Agenda

- » Digital Drivers and Objectives
- » Implementation Priorities
- » What's Next?

DRIVERS and OBJECTIVES



Digital Objectives

- 
- Increase Digital Coverage, Connectivity and Bandwidth in support of Business Retention, Growth and Innovation
 - Increase Digital Coverage, Connectivity and Bandwidth across Rural and Urban B&NES to enable Social Inclusion and Community Safety
 - Future Proof network for R&D and Economic Growth (OPCR)
 - Revenue Generation through leveraging Assets and Services
 - 'Smart' Services to benefit Health, Environment and Economy

– Economic Growth

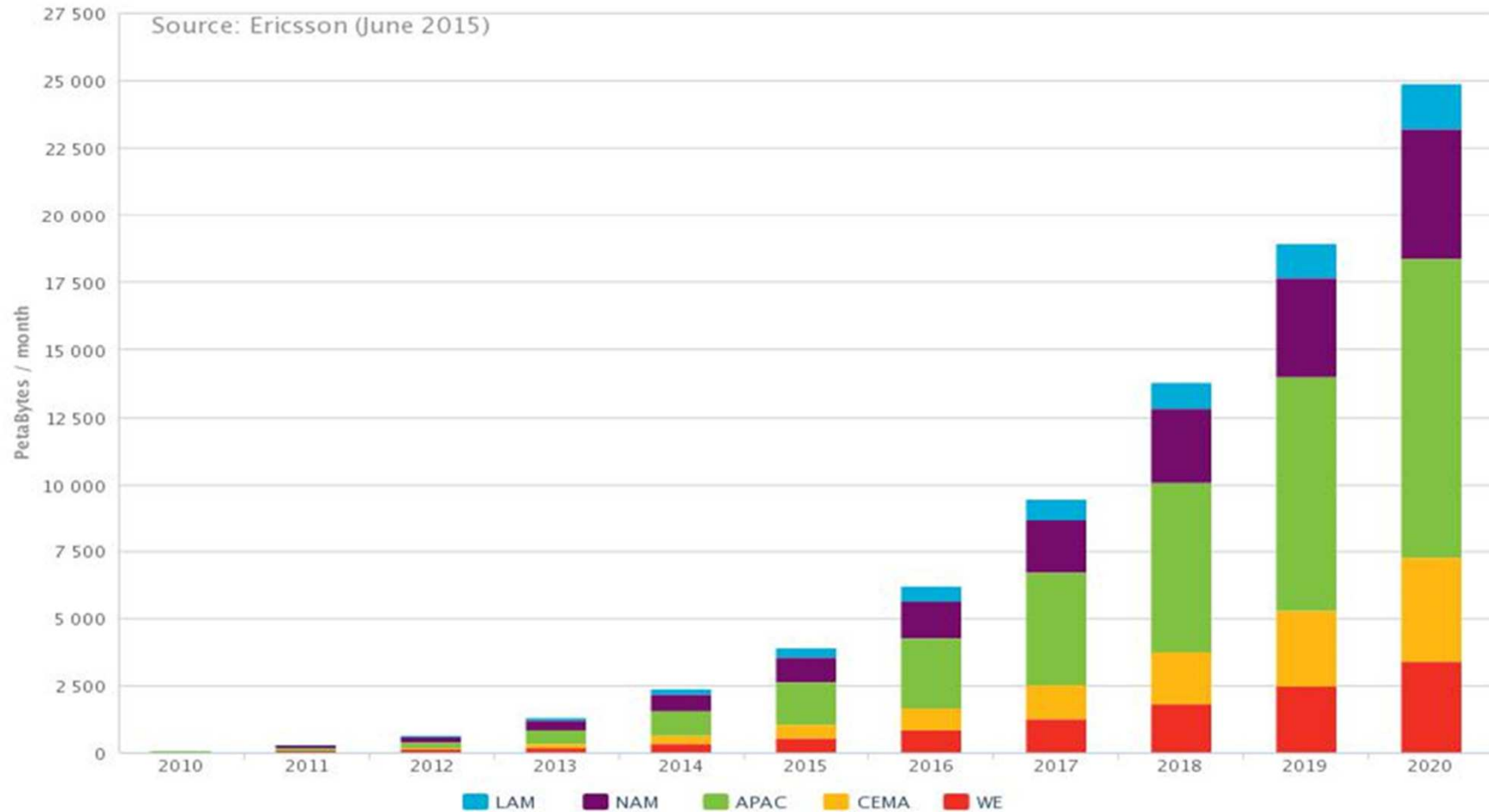
» GVA - economic growth through improved connectivity

The high value added employment sector of “ICT” (2012) alone generated £319,7m GVA for B&NES. The Creative Industries in general £235,3m in GVA in BANES with 700 businesses employing some 4,200 people supported by a further 2,500 individuals in self employment.

- » Need to grow high value added jobs from **13% to 20% by 2026**, in particular in Creative, Advanced Engineering and ICT industries
- » Broadband coverage and bandwidth is key to the growth
- » A number of Business and Enterprise areas are struggling with low connectivity and bandwidth. Bandwidth demand to increase significantly over next 2 years (**73%**)
- » Fibre optics is the enabler for meeting future data demands, which according to the Minnesota Internet Traffic Studies (MINTS) is growing annually between 40% - 50%!

Bath & North East Somerset Council

Data Traffic – Smartphone in All Technology



Making Bath & North East Somerset - *The place to live, work & visit*

- Future Proof

- Economic Strategy BANES (2014 to 2028)

Bath Enterprise Area (9,000 Gross Jobs / 8,000 Net Jobs) including
Keynsham (1,800 Gross Jobs / 1,600 Net Jobs)

Somer Valley (1,900 Gross Jobs / 1,000 Net Jobs)

**Ensure infrastructure is ‘future proof’ so as to meet future
consumer bandwidth demands.**

- Internet of Things – 1 trillion devices in next 10 years

750 percent data growth in 4 years

- Council Services – Bandwidth Demand on council network

BATH PROGRESS

Cabinets live / coming soon	4
Premises connected to live cabinets	256
Capable of superfast	256
Estimated % completed/in pipeline	41%

Exchange areas connected*

Bath Kingsmead

Coming soon*

Batheaston, Bath Kingsmead

NORTHEAST SOMERSET PROGRESS

Cabinets live / coming soon	21	
Premises connected to live cabinets	5,887	
Capable of superfast		4,670
Estimated % completed/in pipeline		53%
Exchange areas connected *		Batheaston, Saltford, Temple Cloud, Timsbury,
Coming soon*		Chew Magna, Midsommer Norton, Timsbury, West Harptree

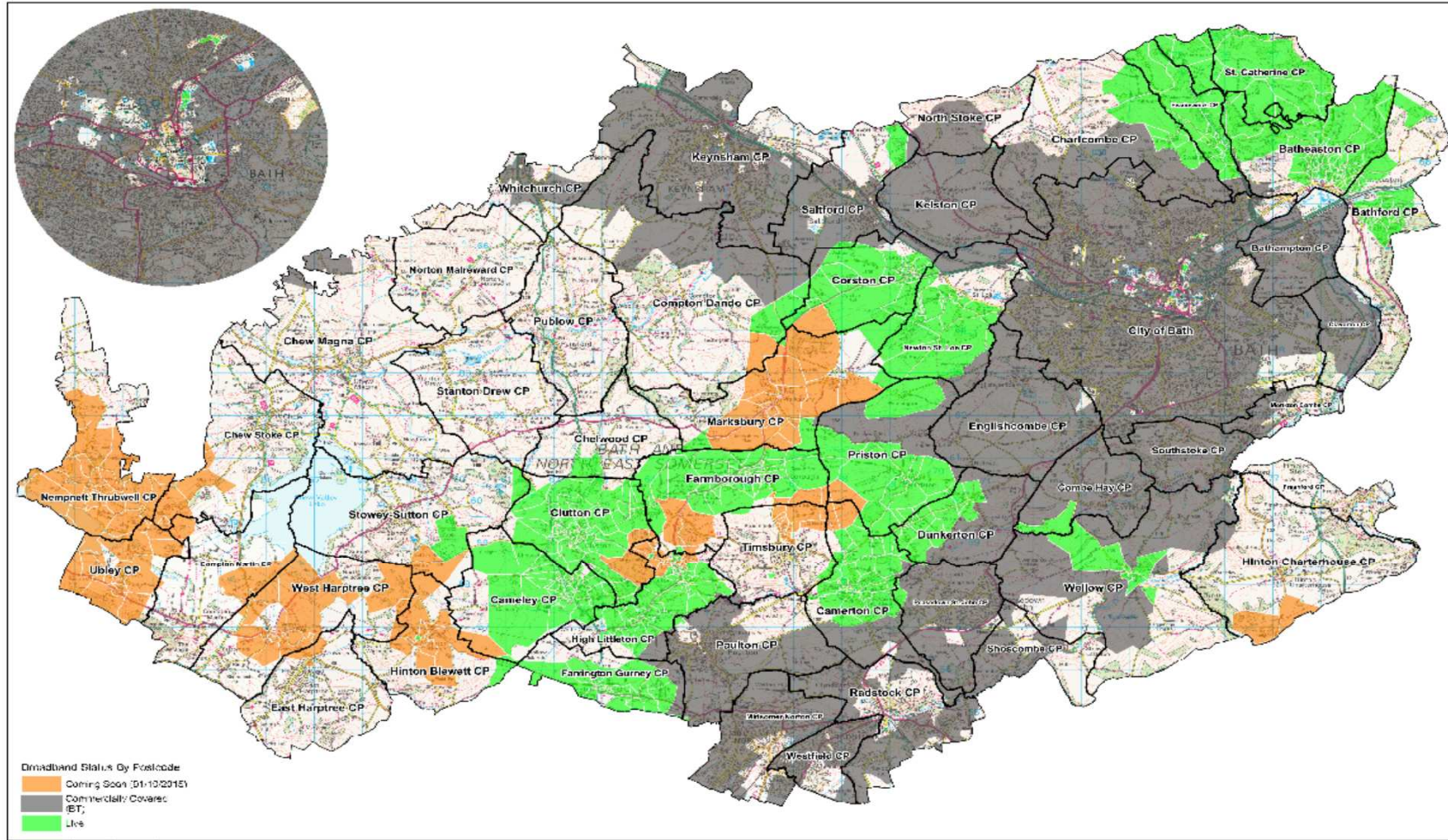
By the end of Phase 1, we anticipate the following will be achieved in your North East Somerset constituency:

Premises able to connect to		
Superfast Broadband through CDS		8,784
Total % superfast		91%
Final 10%		9%

Bath & North East Somerset Council

Map of B&NES broadband coverage

Author: Chris Jenner | GIS Team
 Date: 13/02/15
 Scale: 1:75000
 Bath & North East Somerset Council



Reproduced from the Ordnance Survey mapping with the permission of the Controller of Her Majesty's Stationery Office © Crown Copyright. Unauthorised reproduction infringes Crown copyright and may lead to prosecution or civil proceedings. Licence number: 100023334

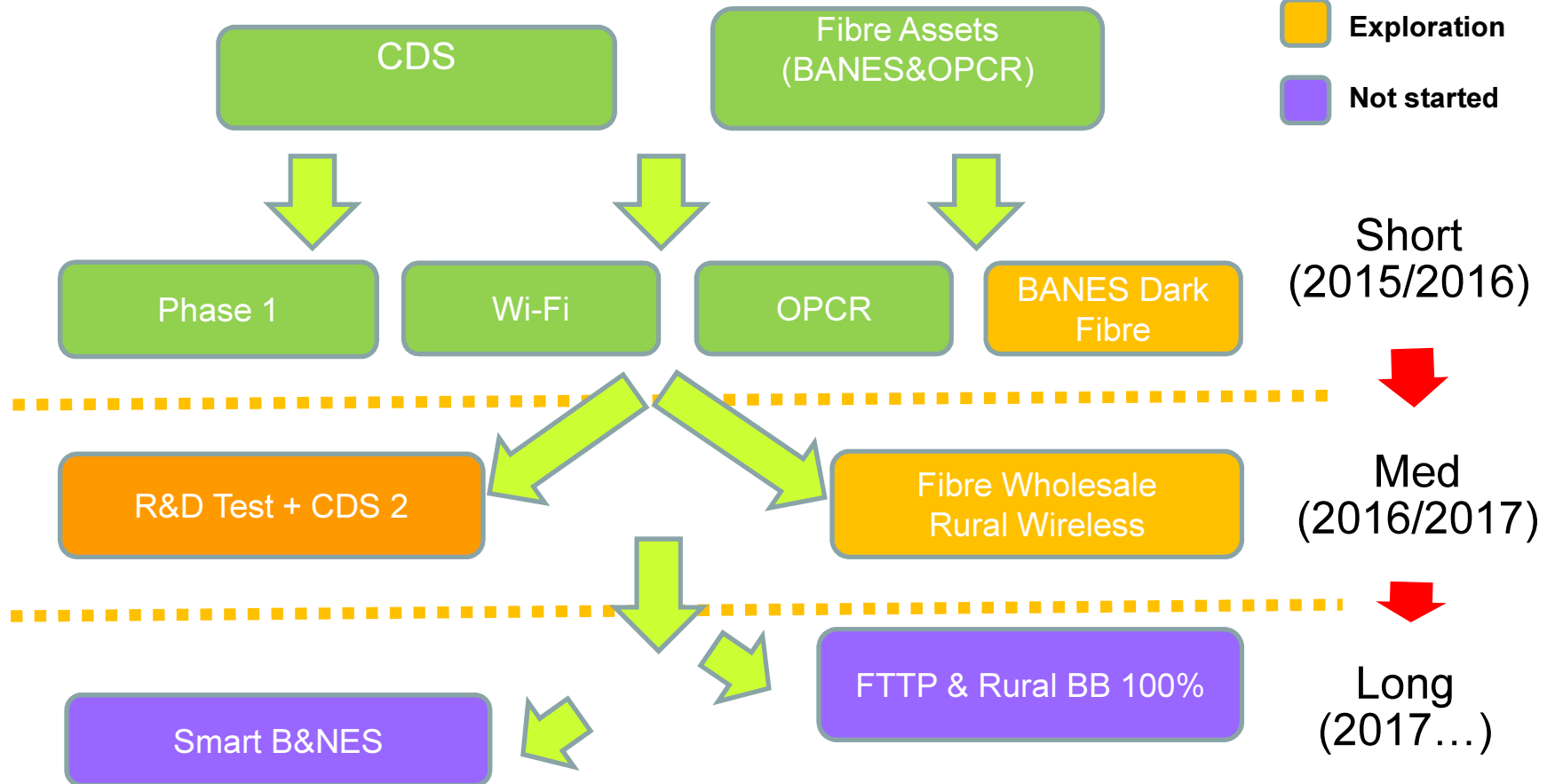
Making Bath & North East Somerset - *The place to live, work & visit*

▪ **Environment**

- » Smart traffic management through integrated platforms
 - *including Safety*
- » IOT Air quality monitoring etc.
 - *including Health benefits*
- » Digital Health Care Services
 - *Paper 'less' health care (billing, prescriptions etc.)*
 - *'E-ficient' Management (less waste, materials etc.)*

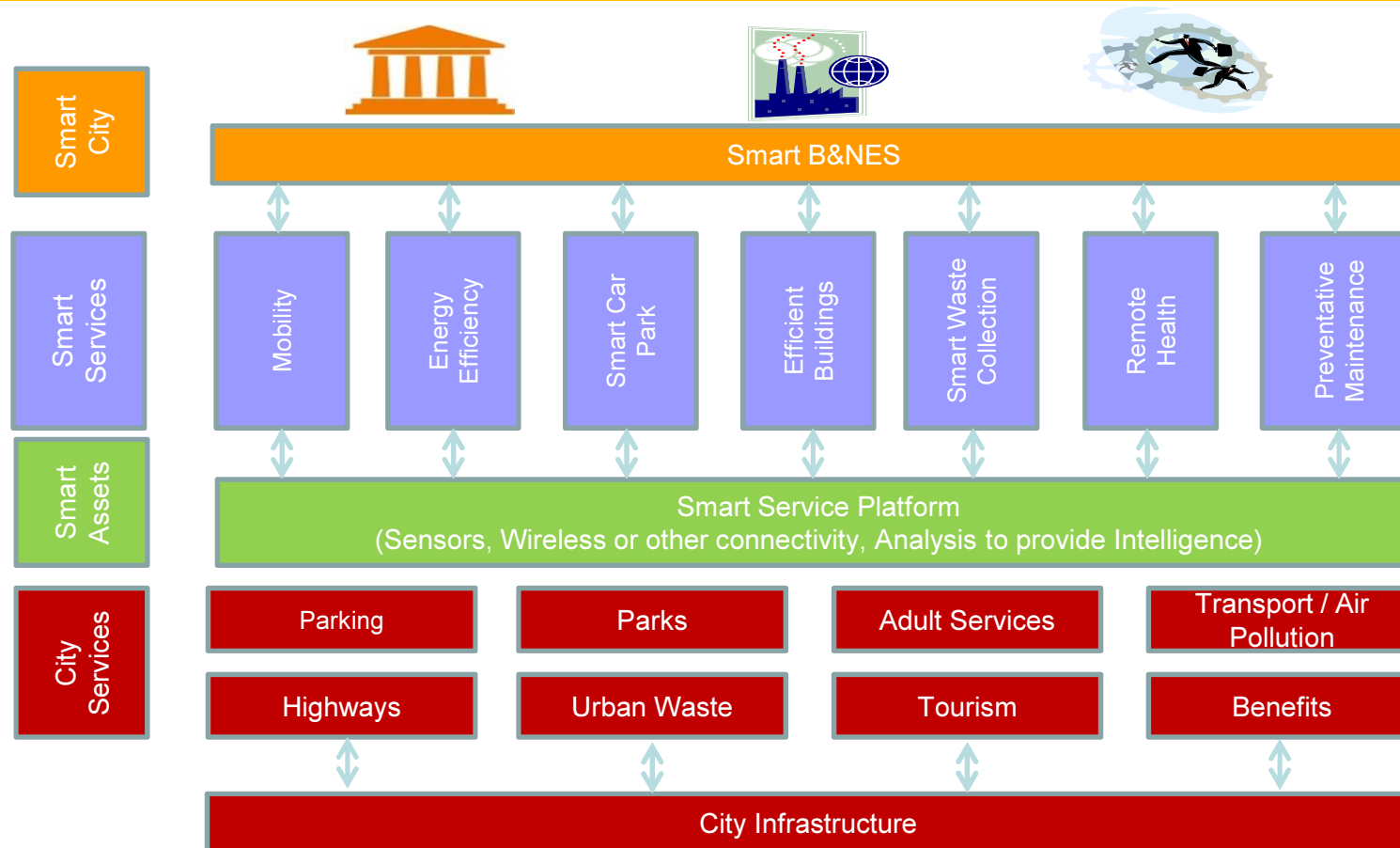
Implementation Priorities

- Officially Started
- Exploration
- Not started



Making Bath & North East Somerset - *The place to live, work & visit*

- Smart City Framework



Making Bath & North East Somerset - *The place to live, work & visit*

Key Success Indicators

- » Provide Rural Wireless Test Network by 2016/17
- » Provide city-wide wireless network in Bath by 2016/17
- » B&NES targeted areas to connect into OPCR network by 2016
- » Superfast Broadband to be available to 90% by 2016 and 95% of B&NES premises by 2018 and 100% by 2020 (CDS)
- » Light up BANES Dark Fibre Fibre by 2017/18 (State-Aid dependant)
- » Provide Smart City Services by 2017/18
- » Provide Revenue Generation by 2016/17

Thank you

